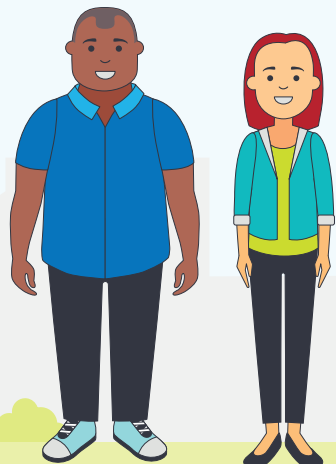


This poster describes how to enter a Specialist disability accommodation agreement.



Specialist disability accommodation is the home you will live in. We sometimes call it SDA.

When you live in Specialist disability accommodation, we call you an SDA resident.



Your Specialist disability accommodation is provided by an SDA provider.



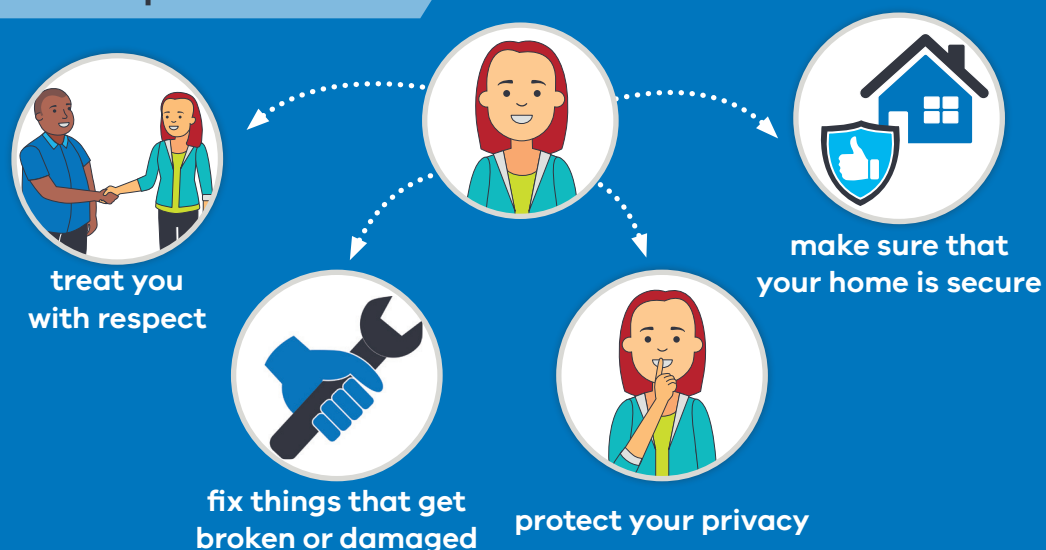
Your Specialist disability accommodation residency agreement is an agreement between you and your SDA provider.

## Living in Specialist disability accommodation

You must:



Your provider must:



## Signing a Specialist disability accommodation agreement

1



Today I will give you the agreement and the information statement. You should read them both carefully.

2



I will explain the information statement to you today. Your support person can also help you understand it.

3



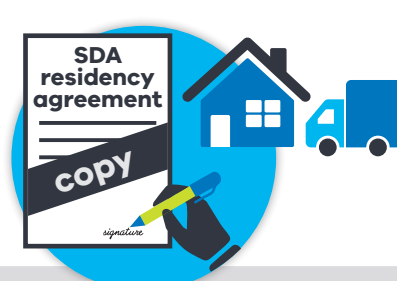
You will have seven days to think about the agreement.

4



You can start the agreement with us after seven days.

5



I will give you a copy of the agreement before you move in.

6



**Welcome to your new home!**

## Contact us

